

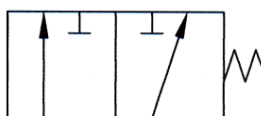
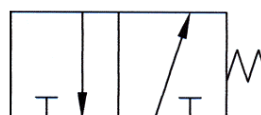
The 3/2 way mechanical valves V2H3 are designed for maximum reliability and service quality. The heavy-duty construction without electronic components guarantees a long service life. All inner parts including the valve seat can be replaced.

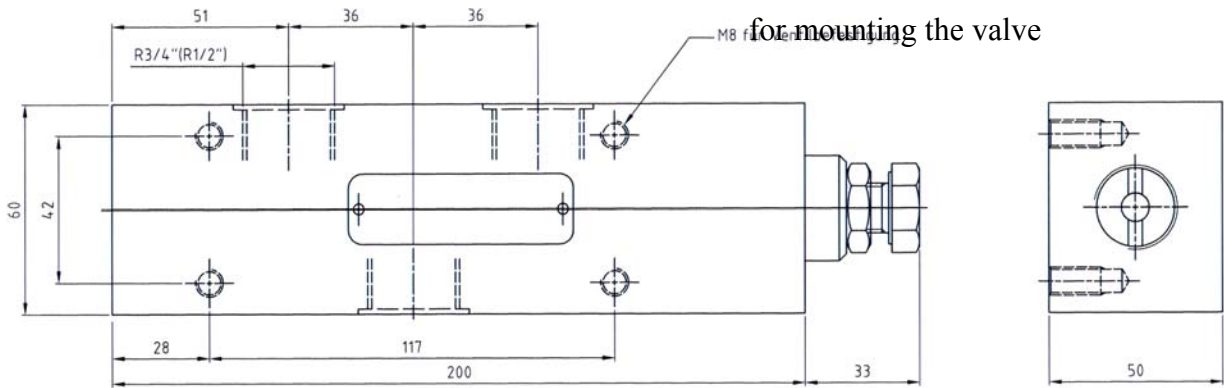
Technical data:

Design: directly actuated, normally closed
 Materials: Valve body: Nickel plated brass or stainless steel 1.4301.
 Inner parts: stainless steel 1.4034
 Valve seat: stainless steel 1.4034
 Mounting position: as required
 Weight: V2H3M-2: 4000g
 V2H3M-4: 3000g
 Medium: Water; oil of differing viscosity, models can be supplied on demand for other mediums.
 Operation: mechanical triggering
 Application: Hydraulic for maximum reliability for use in power stations, water distributors and high service quality plants

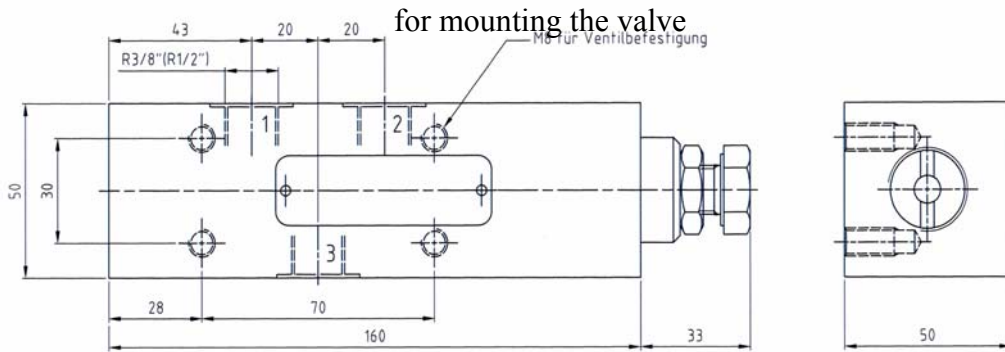
Type	Operating pressure [bar]	Flow \varnothing [mm]
V2H3M-2	0 – 100	15
V2H3M-4	0 – 200	8

Hydraulic diagram:





V2H3M-2 Type 5076



V2H3M-4 Type 5072



V2H3M mechanical